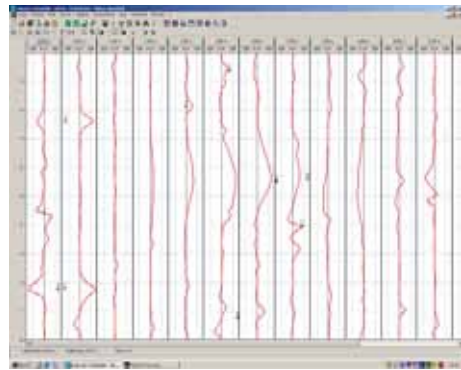


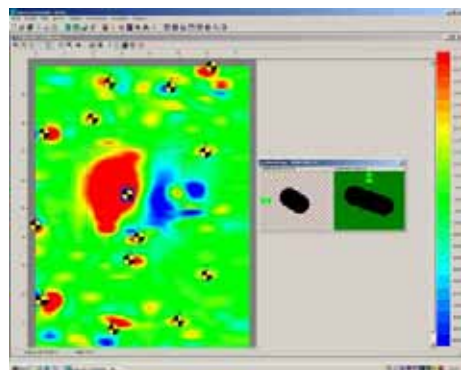
## VALLON EVA2000®\*

This evaluation software allows the processing of the survey data transferred to a PC.

The measuring graphs of the survey data are displayed in a grid and in a field map.



For better identification and evaluation the magnetic interferences are displayed as colour field map.



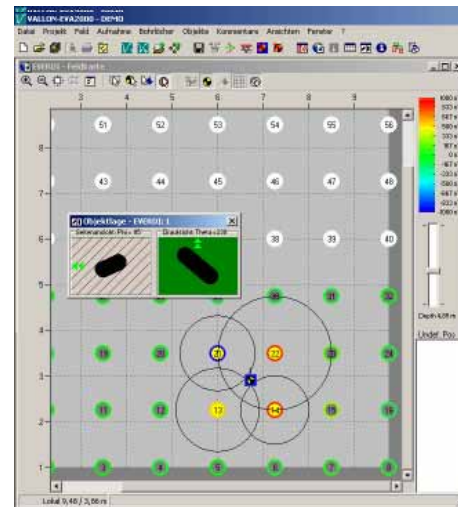
Topographic maps can be inserted true-to-scale (bmp, jpg, dxf etc.). With DGPS the local coordinates in meters and the GPS-coordinates are used. All common systems of coordinates can be displayed.



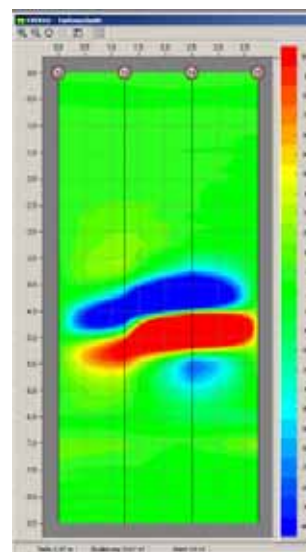
All maps can be exported (dxf). The automatic algorithm calculates all objects in a field at the touch of a button. Object position and object depth are indicated on the object list. Filter functions facilitate the

Id	Coord	Y	Theta	Phi	Theta	Manometer	Dipol	LSD	Auto	Optimise	Erweich	Erweichung
nr	in	in	in	in	in	in	in	in	in	in	in	in
1	0.20	1.81	0.11	107	257	201	1413	19.4	X			5.59
2	0.00	4.40	0.07	271	55	150	525	18.1	X			2.92
3	0.30	7.63	0.04	97	272	236	815	11.8	X			2.54
4	0.18	1.70	0.19	79	250	201	2256	28.1	X			8.91
5	2.00	8.14	0.16	7	0	114	263	12.3	X			0.37
6	2.73	0.77	0.36	76	340	134	2305	25.1	X			5.81
7	3.27	5.53	1.85	60	75	209	23436	27.3	X			10.24
8	2.80	5.30	0.26	81	90	95	1057	14.5	X			1.94
9	6.16	5.95	0.13	80	169	173	843	39.7	X			4.03
10	3.70	5.60	1.53	278	254	131	126680	36.8	X			14.68
11	3.63	3.97	0.03	32	232	139	506	59.1	X			0.95

evaluation. For borehole detection a lot of evaluation tools are available:



- A library with borehole plans
- Intersection of the complete field
- Intersection of marked boreholes
- Automatic dipole algorithm



### Technical Data:

Sensor input analog:	0 to ± 2.048 nT and 0 to ± 20.480 nT
AD-Converter:	22 Bit, 40 measrg. values per second, 2.5 cm measrg. point distance at 1 m/s
Sensor input digital:	RS232
Number of sensor inputs:	1 or 4
Storage capacity:	without GPS: 12 h, 175 km, 8 ha, with GPS: 9 h, 153 km, 7 ha
Power supply:	external, 6-12 V DC
Display:	100 mm x 80 mm, LCD, graphical, illuminated
Navigation system:	SEPOS®-connector, DGPS-connector (NMEA-0183 Vers. 2.0 or 2.1, GGA-String with 1 PPS)
Data output:	serial USB
Data safety:	approx. 5 years from power failure or parting of cable
Operation temperature:	-5°C to +50°C (-25° with restrictions of readability of LCD)
Weather-resistant:	watertight up to 0.5 m
Weight:	1.4 kg
Dimensions:	140 x 200 x 70/80 mm
Dimensions of transport case:	430 x 310 x 180 mm
Weight complete in transport case:	4.05 kg
*SEPOS®-borehole and software VALLON EVA2000® are options, and have to be ordered separately	

All technical data are subject to change without prior notice

Issue 08/2007

Vallon GmbH • Im Grund 3 • D-72800 Eningen • ☎ +49-7121-98550 • Fax: +49-7121-83643  
E-Mail: info@vallon.de • internet: www.vallon.de

## Vallon Field Computer VFC1

Computer Aided Detection of UXOs  
with Ferrous Locators



- Rigid and weather-proof
- Guided menu in different languages
- Data acquisition and evaluation at site
- Connection to ferrous locators
- Direct connection to borehole sensors
- 1 or 4 channels
- Connection of SEPOS® and DGPS

Searching with Excellence

## General

The Vallon Field Computer VFC1 is a most capable Vallon-data logger for explosive ordnance disposal.

This rigid and splashwatertight computer is used for the computer aided detection of unexploded ordnances in combination with Ferrous Locators.



The electronics processes both analog and digital signals of the connected sensors.

A microchip-PC controls the settings, data acquisition and data evaluation as well as the navigation systems SEPOS® and DGPS.

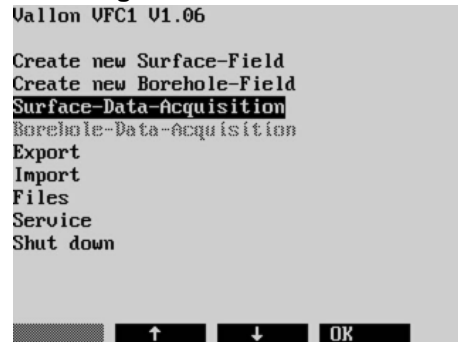
The powerful electronics, which is protected by a weather-resistant metal housing of 1000 cm³ only, allows to record and to store the measured signals of 4 analog sensors and data of an area of 8 ha.

Power supply via the connected detector or via an external power supply unit, for example for borehole detection or multisensor detection.

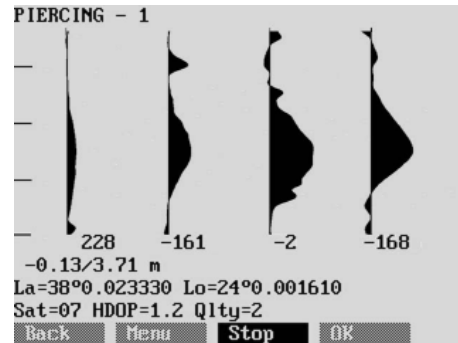


## Software

Following the capable evaluation software VALLON EVA2000® also the VFC1 contains an extensive and easy to operate system software with following features:



- Selection surface or borehole
- Data import or export
- Number of sensors
- Data acquisition



- Real time graphic display of measuring graph(s)
- Object calculation
- Creating or up-loading a borehole plan from VALLON EVA2000®

Object	Depth	Radius	Area
1	0.00	0.00	m
2	1.00	0.00	m
3	2.00	0.00	m
4	3.00	0.00	m
5	4.00	0.00	m
6	5.00	0.00	m
7	6.00	0.00	m
8	7.00	0.00	m
9	8.00	0.00	m
10	9.00	0.00	m
11	10.00	0.00	m

- Loading borehole fields or surface fields from VALLON EVA2000® to continue data acquisition
- View of the detected area
- Refinding detection gaps or objects with DGPS

## Surface Detection

### Single-channel

For single-channel detection the following Vallon-Ferrous Locators can be connected to the VFC1-1:



EL 1302xx, EL 1303xx, VET1 and VET2.

SEPOS®, external tac and DGPS can be connected as navigation systems.



## Multichannel

For multichannel detection the following Vallon-Ferrous Locators can be connected to the VFC1-4: Sensor tube type EL 1303 and VET1 (direct connection without additional electronics unit)

SEPOS® and DGPS can be connected as navigation systems.



## Borehole Detection



For borehole detection the following Vallon-Ferrous Locators can be connected to VFC1: EL 1303A1, EL 1303DX, EW 1505, EW 1505D

It is most comfortable to use the borehole adapter VXB1 with a sensor tube type EL 1303 because it can directly be connected to VFC1 without additional electronics unit. The power supply is provided by the two built-in rechargeable batteries.



The patented SEPOS®- borehole\* detector can be used as navigation system. This allows to determine the borehole depth automatically so that the accuracy of the recorded data is independent from the lifting speed of the sensor.



## Data Transfer

As for computer-aided detection and especially during multisensor detection large data quantities are stored, a quick data transfer to a PC is required in order to have the data available for subsequent evaluation.

Data transfer from VFC1 is done via the serial bus-standard USB. With a



data transfer cable the complete memory of VFC1 can directly be transferred to and stored on a Memory Stick having the size of a ball pen. Data transfer time is less than 1 minute.

## Safety of Data

For computer-aided detection it is especially important to protect the stored data.

The complete time and work required for data acquisition is finally put into the memory of VFC1.

Therefore, the VFC1 uses flash storage cards offering highest data safety.

Even in case of failures of the power supply or connection cable or other serious errors, the data are stored in the memory for years.

With this technology, it is no problem to extend the storage capacity.