

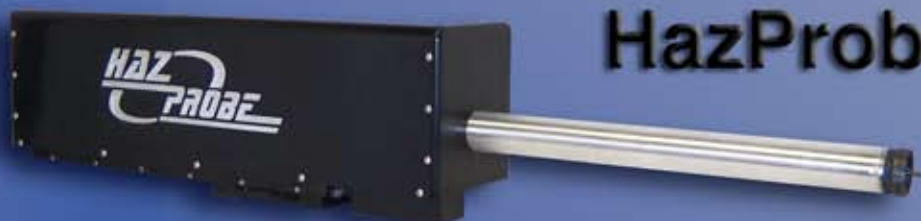
COLMAR PA.
wmrobots.com

Robotic products designed with
input from users and technicians
in the following arenas:

EOD & IEDD
S.W.A.T.
Fire & Rescue
Nuclear
Chemical & Petroleum
Mining



KNIGHT



HazProbe

CAPABILITIES, FEATURES, AND BENEFITS

OCU



15" Multifunctioning LCD Display

Arming & Firing Switches



Infinitely Adjusting Joysticks

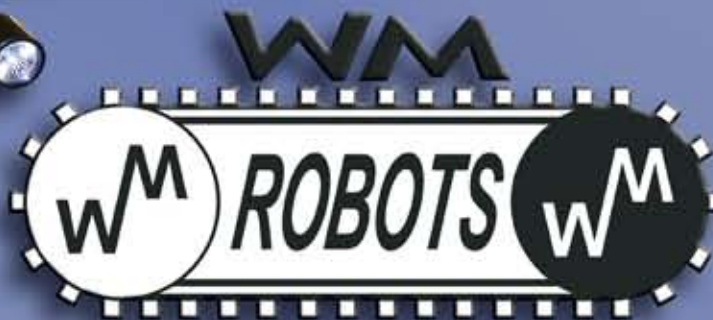
- Sensors integrated into robot's control system with switch-able real-time onscreen display for optimal situational awareness.
- Onboard system diagnostics with real-time onscreen display for immediate corrective action.
- Infinite-position joysticks provide precise and smooth vehicle and arm joint control.
- All joysticks can be recalibrated quickly on site by user without additional tools.
- Firing circuits meet U.S. military safety standards for operator safety and prevention of accidental discharge.
- Large 15" daylight-readable LCD monitor for excellent image readability.
- Monitor panel possesses front panel A/V recording jacks for convenience.
- RF and fiber optic Communication links provide two-way audio and data and one-way video.
- If cut, the fiber optic communication link can automatically switch to RF mode for un-interrupted mission accomplishment.
- Control station has an integrated extended-life battery and radio for rapid deployment and redeployment.



MOUNTABLE ACCESSORIES



and many more...



COLMAR PA.
wmrobots.com

Precise movement provided by a zero-backlash manipulator arm with 7 articulated infinite-position joints.

Robots offers (2) 300:1 zoom auto focus/auto iris and (2) fixed-focus (one is re-locatable) cameras. Near Infrared light/camera kit available.

Mounting brackets are available for most standard accessories. Custom brackets can be designed and manufactured.

Optional High-Intensity Light Kit.

Innovative wrist, pitch, and extender assembly offers virtually no play at full extension.



KNIGHT

Rapidly deployable due to switch-able integrated RF and fiber-optic communication links.

Independently controlled surveillance arm.

Remotely listen and speak with two-way audio and built in microphone and loudspeaker.

On-board system diagnostics.

Capable of using popular LVIEDD accessories.

Battery life of OCU and robot meet or exceed most mission requirements.

Elbow and shoulder with built-in turret are capable of lifting up to 260 lbs near the KNIGHT's front edge.

Tracks allow robot to climb 45° stairs and travel on any terrain. They are easily and quickly removed or installed.

Both the robot and the control station are weatherproof to IPX5 standards and can be easily decontaminated.

Driving lights positioned for proper night time operation.

GRIPPER & WRIST

Unique wrist and gripper can pitch, extend, and continuously rotate.

Zero Backlash motion provides very precise and repeatable control.

Gripper-mounted cameras rotate with gripper for best possible view of objects.

Gripper and control arm are capable of lifting objects up to 260 lbs along robot's front edge.

Notice how camera location prevents the gripper from obstructing view.



We set up the KNIGHT's electronics to be accessible, scalable, and modular with a convenient data port for software upgrades. System has JAUS compliance capability.

ELECTRONICS



HazProbe

Mountable to most popular platforms.

Controlled and viewed from your robot's OCU



Self-ejecting drill bit and emerging camera.

Self-illuminating pan and tilt camera.



Optional stand-alone capability.



Metal, Wood, and Window-Breaking Bits

Wolstenholme Machine Inc. (WMI) is a small business operating since 1980. Located in Colmar, PA, WMI is a precision machine shop that employs approximately 40 individuals and caters to the needs of the aerospace, medical, telecommunications, defense, and high technology industries.

In August 2001, one active and two retired members of the Philadelphia Bomb Squad approached WMI's President, Bob Wolstenholme, with a concept of a robotic device capable of remotely boring into, inspecting, and evaluating suspicious vehicles or objects. WMI created a privately funded sister company called Wolstenholme AeroMed to develop the robotic product which became known as the HazProbe.

Subsequent to the tragedy of September 11th, 2001 and in response to the increased emphasis on counter-terrorism and Homeland Security initiatives, WMI conducted extensive research and testing of unmanned robotic platforms to develop integrated robotic systems. Our development efforts and ongoing enhancements have resulted in our flagship, the new and improved KNIGHT.

"It is obvious that the staff and management at WM are not just concerned with moving products out the door, but are dedicated to supporting their products and their customers. Based on the reliability of the KNIGHT and the dedication of Wolstenholme Machine's staff and management to customer service, I would recommend consideration of the WM line of Hazardous Duty Robots for the law enforcement mission."

*Major Richard S. Zenk
Director
Pennsylvania State Police
Bureau of Emergency and
Special Operations*

For a demonstration or detailed specifications and capabilities, please contact the factory: 215-822-2525 or email RobotSales@WMRobots.com



COLMAR PA.
wmrobots.com



WM Robots, LLC.
Wolstenholme Machine Inc.
Wolstenholme AeroMed Inc.
3075 Advance Lane
Colmar, PA 18915
215-822-2525
215-822-6278 fax

**WOLSTENHOLME MACHINE, Inc.
WOLSTENHOLME AEROMED, Inc.**